

Challenges & Barriers in Inter-professional Education in University

A Six Years Journey

Supported by Teaching Development and Language Enhancement Grant, and Knowledge Transfer Project Fund

LEE VWY¹, CHAU JPC², LAU ASN³, LAI PBS⁴, WONG SYS⁵, WONG WWT⁶, CHUNG MWY⁶, CHAN WCH⁷, CHAN KC⁷, NG EEN¹, FONG FYH¹, LAM AYM¹, NGAI LYS¹, LO LLH¹, LEUNG MWK², CHAN AWT¹, CHAU HHY², YU THL¹, LO ACY¹, CU CHAMPION Core Team¹⁻⁷
 1. School of Pharmacy 2. The Nethersole School of Nursing 3. School of Biomedical Sciences
 4. Office of Medical Education 5. The Jockey Club School of Public Health & Primary Care
 6. School of Chinese Medicine 7. Department of Social Work

The development of inter-professional Education (IPE) has never been easy in university education. Our team has met various challenges and barriers over the years such as lacking secured funding sources, understaff, curriculum constrain and logistic issues. However, we are still able to overcome these barriers and make favorable outcomes every year.



CHAMPION

香港中文大學

醫學院社區健康及藥物安全外展隊

www.cuchampion.com/en

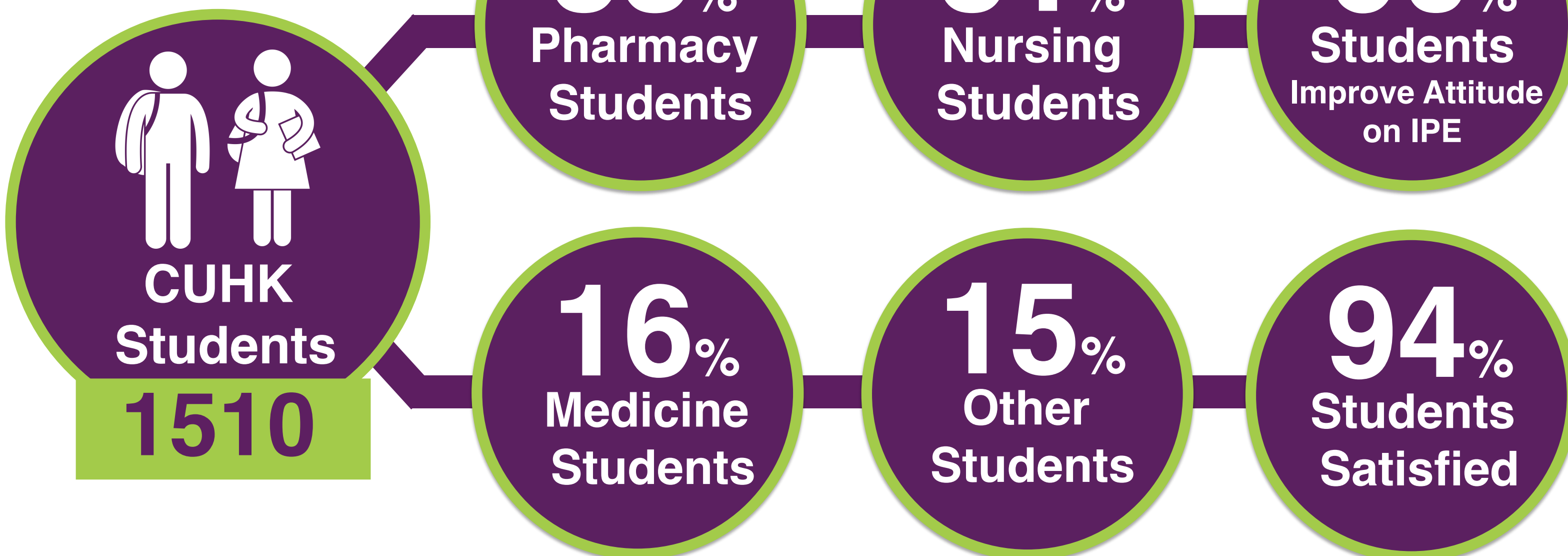
cuchampion@cuhk.edu.hk

Developed in 2013, CU CHAMPION (Community Health And Medication-safety Promotion Inter-school Outreach Network) is an inter-disciplinary outreach service team and a service learning program of the Faculty of Medicine, The Chinese University of Hong Kong (CUHK). The team organizes citywide community outreach program every year to enhance locals' awareness on health and medication safety and provide a platform for CUHK students to serve. This poster illustrates CU CHAMPION's outcomes, challenges and solutions toward IPE in the past six years.



Student Volunteers

Since 2013

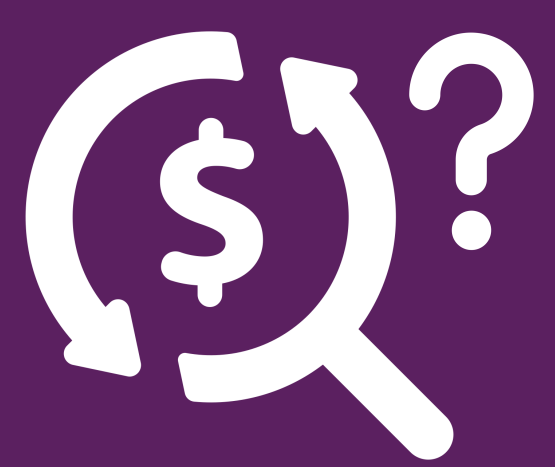


Community Impact

Since 2013

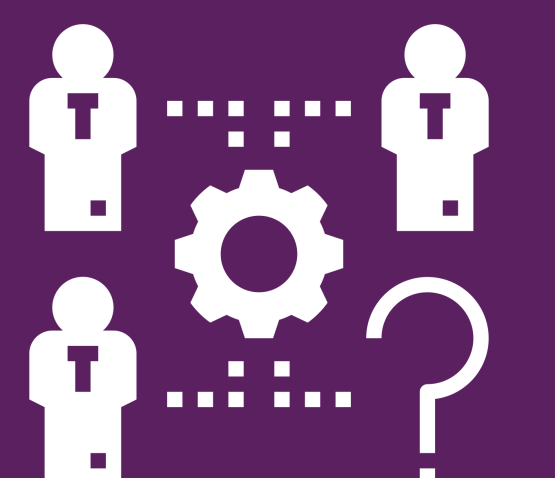


Challenges & Barriers



Funding

- × Lack of designated funding sources focusing on IPE initiatives.
- × Not enough fund for all staff's salaries.
- × It impacts the overall management of the IPE program.



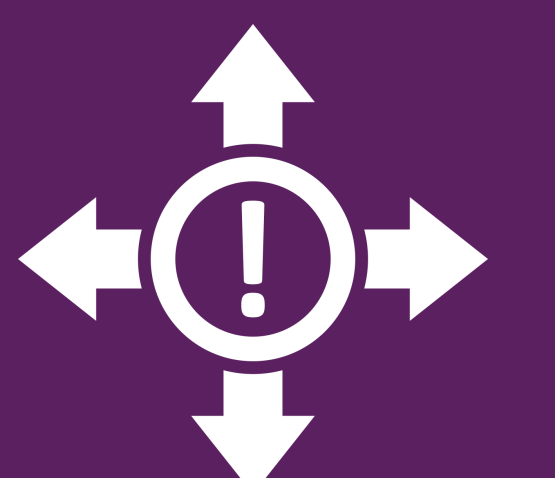
Understaff

- × Difficult to recruit extra project staff.
- × Insufficient fund to hire a full time pharmacist.
- × Limited faculty experiences teaching inter-professional concepts and content.



Curriculum Constraint

- × Hard to recruit student volunteers during academic year.
- × Low training workshop attendance as students have class or work on weekdays.
- × Some students considered CU CHAMPION a School of Pharmacy project.



Logistic Issues

- × Flexibility of locations on and off campus for IPE workshop or outreach events.
- × Lack of "inter-professional" (IP) collaboration during outreach events.
- × Scattered service locations and large amount of resources in summer outreach.

Solutions

✓ Applied and awarded Knowledge Transfer Project Fund in 2013, 2015, 2016, and 2018.

✓ Applied and awarded Teaching Development and Language Enhancement Grant in 2013, 2014, 2017.

✓ Applied and awarded Community Investment And Inclusion Fund (CIIF) from the Hong Kong Government in 2018.

✓ Successfully hired one project coordinator recently as funded by CIIF.

✓ Hire part time pharmacists to facilitate all health related duties.

✓ Work closely with teachers of collaborating disciplines and seek their input on all e-learning and workshop materials.

✓ Arrange most workshops and outreach service events during summer break (Mid May to August).

✓ Organize multiple workshops on Saturdays and upload training materials on e-learning platform.

✓ Form Core Team, which consists of student leaders from different disciplines of the Faculty of Medicine.

✓ Reserve classroom earlier and collaborate with community partners to secure their available sessions 6 months in advance.

✓ A brand new IPE approach will be introduced in 2019 to facilitate more IP collaboration.

✓ Set up resource supply points in different districts to provide and collect outreach equipment and questionnaires.

We benefit greatly from the valuable experience in the past six years. It's always been our passion to strive for betterment in IPE and enhancing students' involvement in the community. We will keep on examining our curriculum and look for more collaboration with colleagues of other disciplines to refine our teaching and learning continuum.